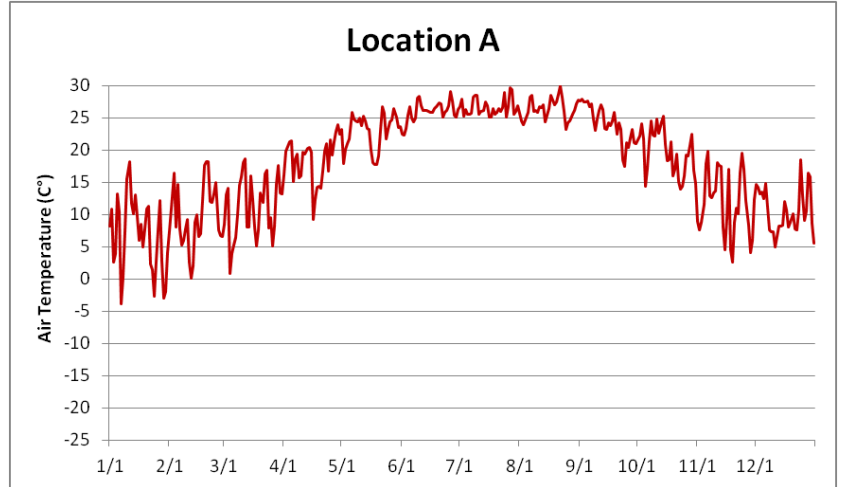


## Mystery Locations Activity (**answer key**)

Locations include Jacques Cousteau Reserve (NJ), North Inlet/Winyah Bay (SC) and Urbana (IL).

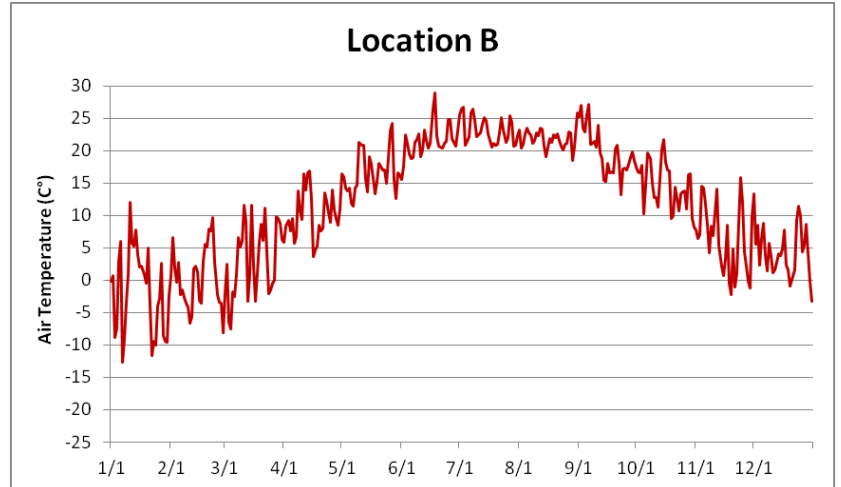
Location A is: **North Inlet SC**

- The total range of air temperatures for this location is relatively low (i.e. 35°C), suggesting temperature variability is mediated by proximity to the ocean.
- The minimum (-5°C) and maximum (30°C) temperatures recorded at this location are higher than the two locations, suggesting it is the most southerly of the three locations.



Location B is: **Jacques Cousteau NJ**

- Similar to Location A, the total range of air temperatures for this location is also relatively low (i.e. 35°C), suggesting proximity to the ocean.
- The minimum (-10°C) and maximum (25°C) temperatures recorded here suggest a location that is more northerly than location A.



Location C is: **Urbana IL**

- This location is not near the ocean as evidenced by the higher temperature range (50°C).
- Lower minimum temperature (-20°C) suggests a more northerly location and also one that is inland.

