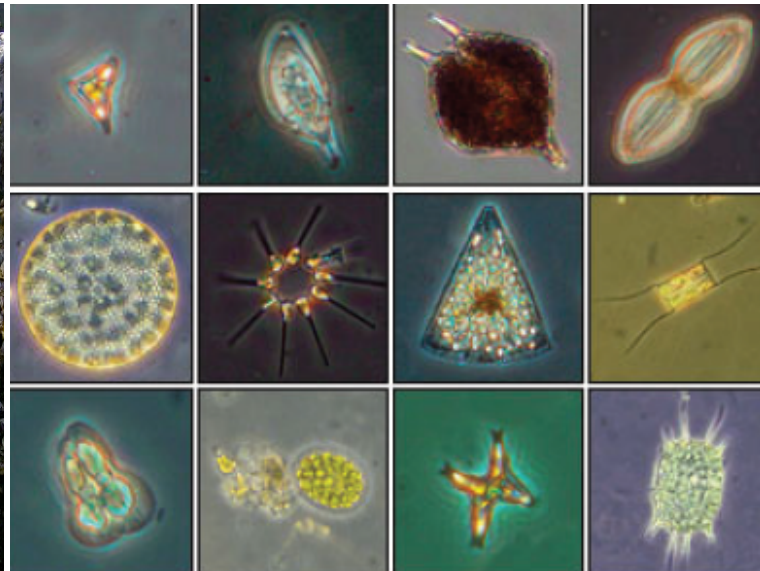
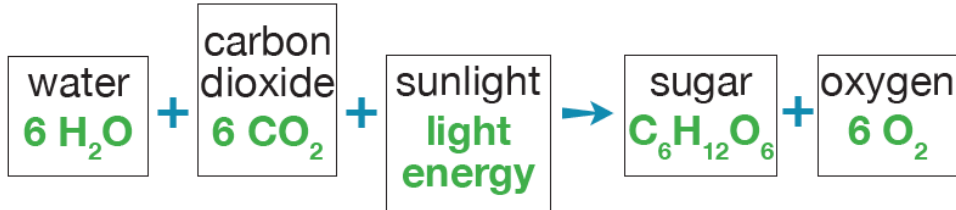
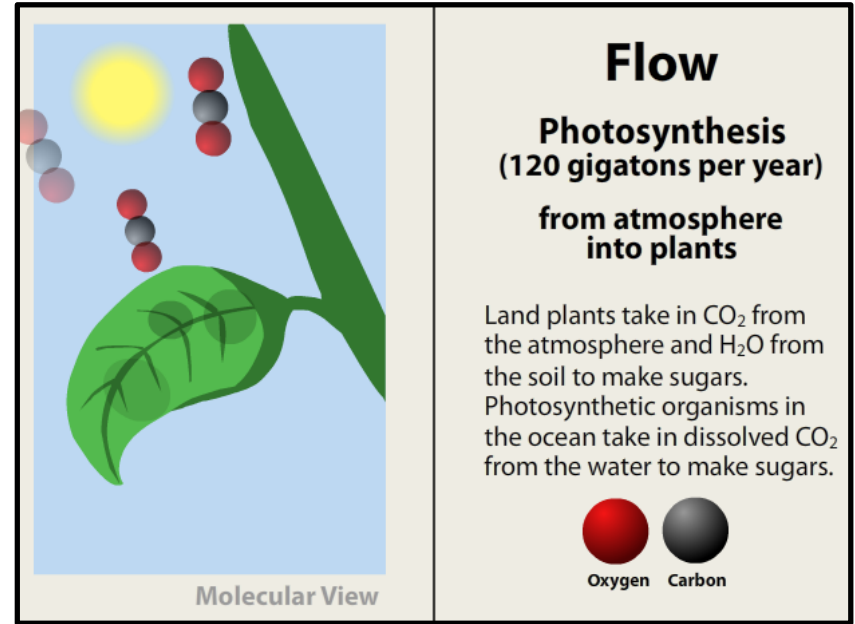


A



Photo credits, clockwise from top left: Alex Needham, EPA.gov, <http://www.free-picture.net/airplane/a-47-airplane.jpg.html>, <http://zoyler.com/top-10-heaviest-animal-in-the-world/>, Frank Vassen, Seighean

B



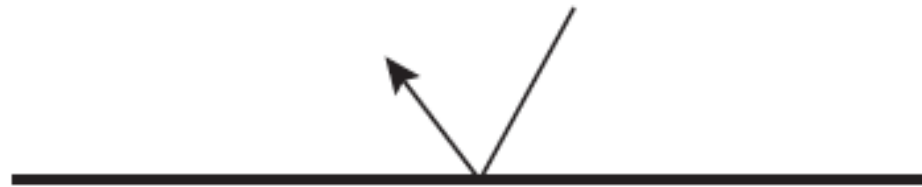
[http://en.wikipedia.org/wiki/File:Seaweed\\_600.jpg](http://en.wikipedia.org/wiki/File:Seaweed_600.jpg)

All images provided courtesy of UC Regents, unless otherwise noted.

transmit

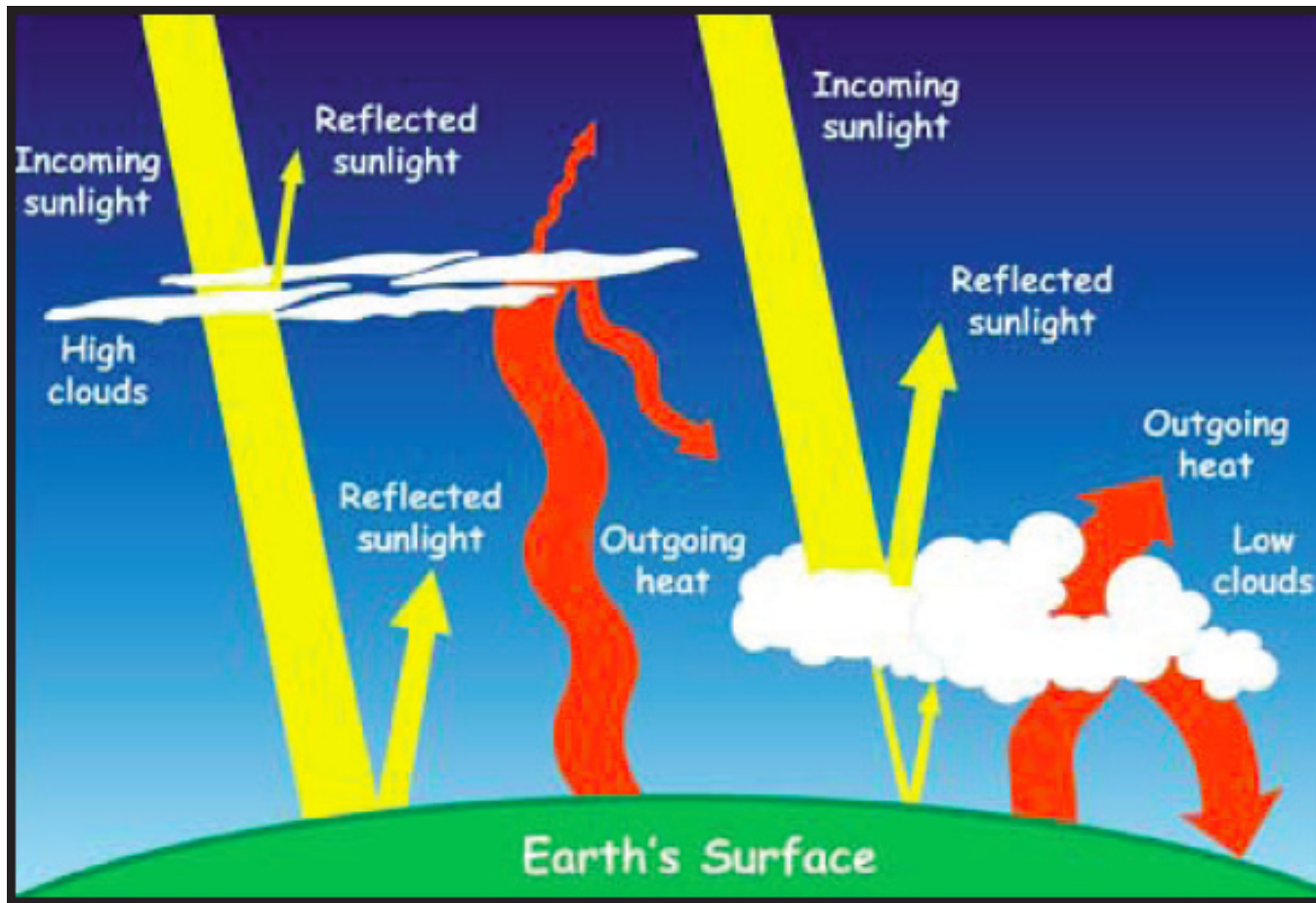


reflect

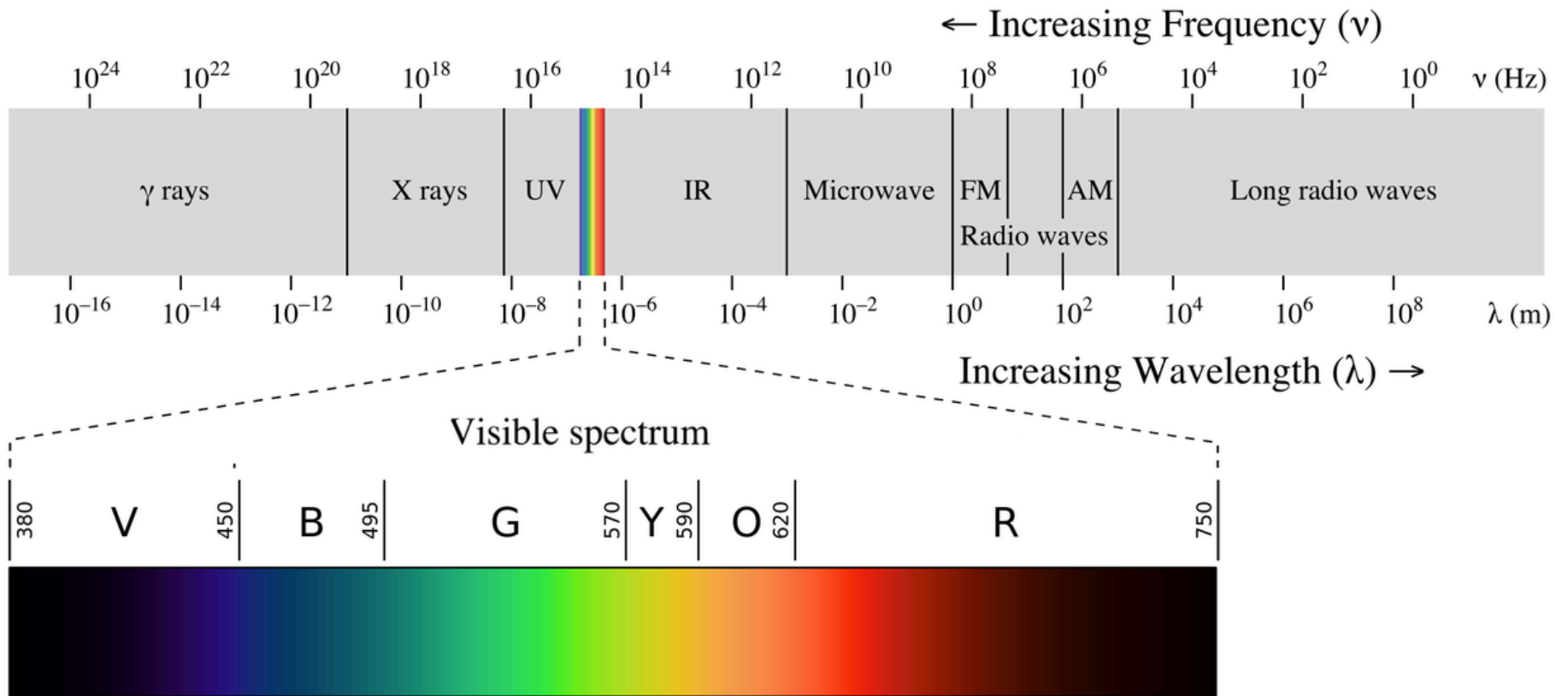


absorb





| Solar Energy Absorbed |            | Solar Energy Reflected |            |
|-----------------------|------------|------------------------|------------|
| Clouds                | 3%         | Clouds                 | 20%        |
| Atmosphere            | 16%        | Atmosphere             | 6%         |
| Land and ocean        | 51%        | Land                   | 4%         |
| <b>TOTAL ABSORBED</b> | <b>70%</b> | <b>TOTAL REFLECTED</b> | <b>30%</b> |



[http://commons.wikimedia.org/wiki/File\\_talk:EM\\_spectrum.svg#mediaviewer/File:EM\\_spectrumrevised.png](http://commons.wikimedia.org/wiki/File_talk:EM_spectrum.svg#mediaviewer/File:EM_spectrumrevised.png)

# Keeling Curve: CO<sub>2</sub> Levels in the Atmosphere

